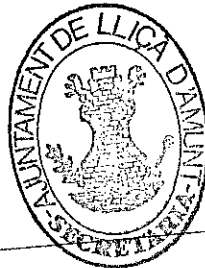




Aprovat definitivament per l'Ajuntament  
a la sessió del dia 15 Novembre 1998  
de 19 \_\_\_\_\_

El Secretari,





*[Handwritten signature]*

T

	Col·legi d'Arquitectes de Catalunya
02 OCT. 1998	98004867
<b>VISAT</b> COMPLEMENTAT E.S.S.	Ordre 33/90, Llei 13/1982 del 17/12 Estabul 107/84 aprobats D.O.G. 7/12/84 Llei 7/1997 de 1/4/98 



PROYECTO	ESTUDIO DE DETALLE PARCELAS 1, 5, 6, Y 7	
PROPIEDAD	SR. MARUGAN	
SITUACION	P Can Salgot, 1 LLIÇA D'AMUNT	
PLANO DE PLANTAS Y SECCION	E: 1/200	
EL ARQUITECTO	LA PROPIEDAD	
 Angel Biurrun Contreras		MARZO 1998

CARRER DE CAN ROURE

3

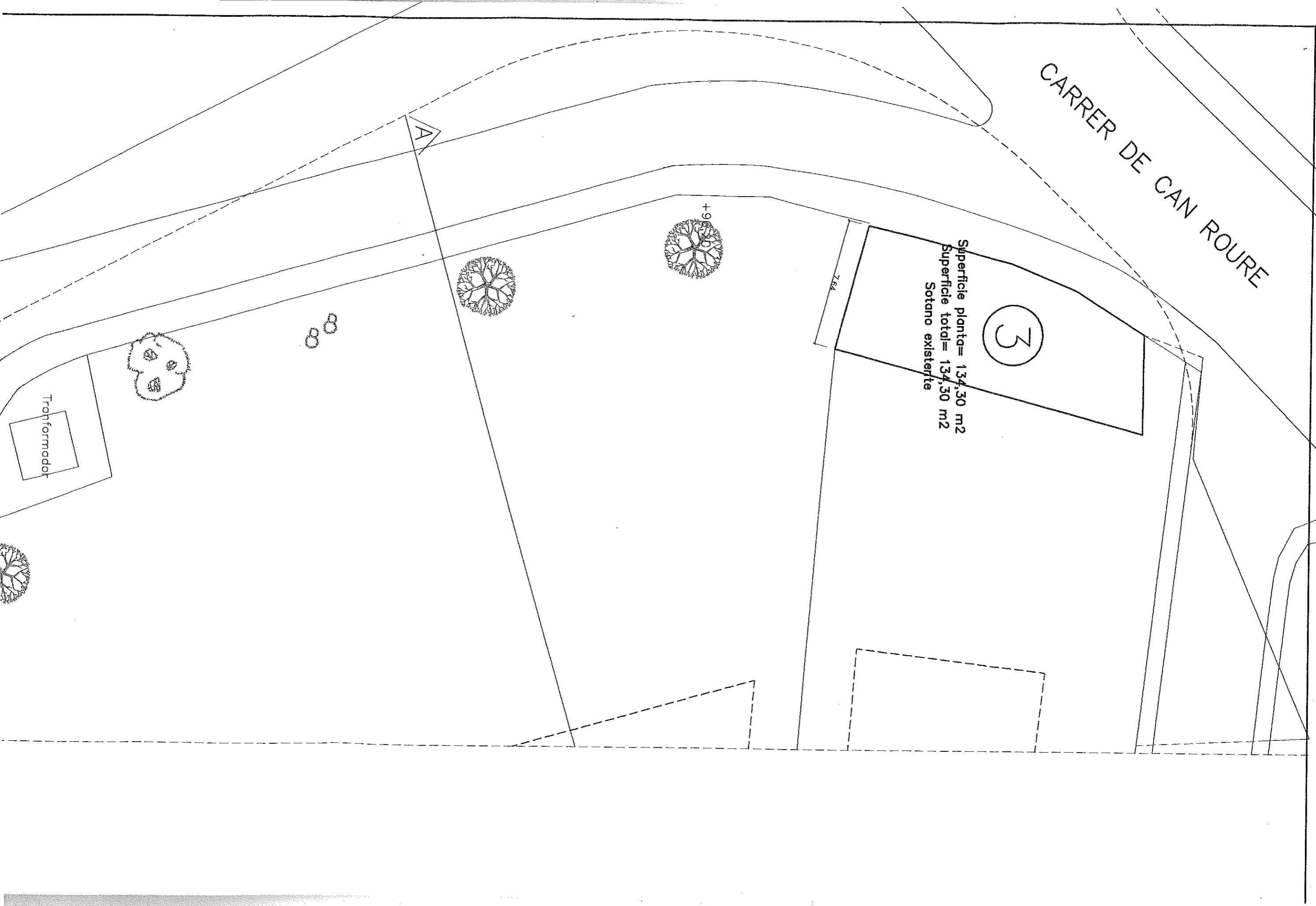
Superficie planta= 134,30 m2  
Superficie total= 134,30 m2  
Sotano existente

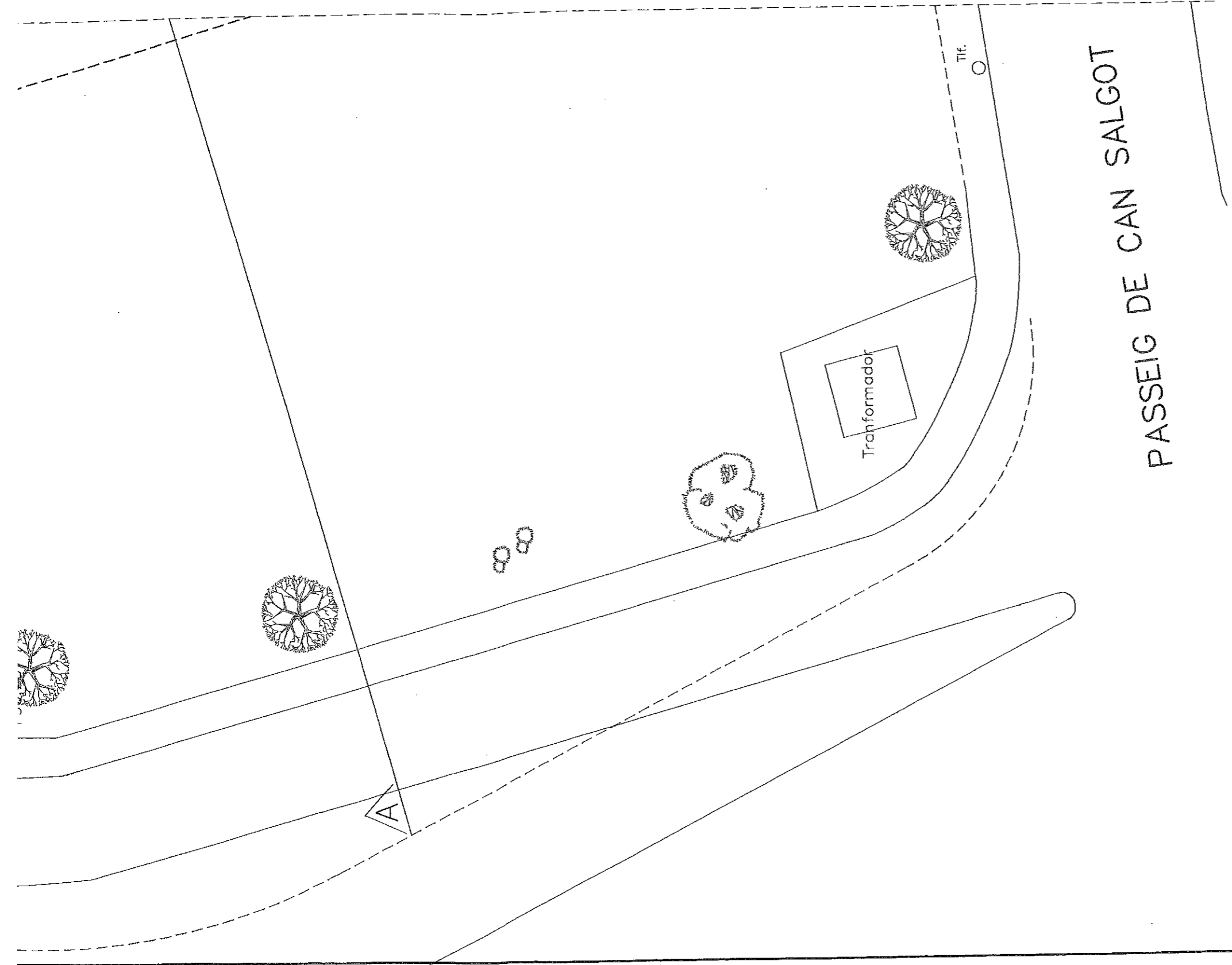
7,84

+9,6

A

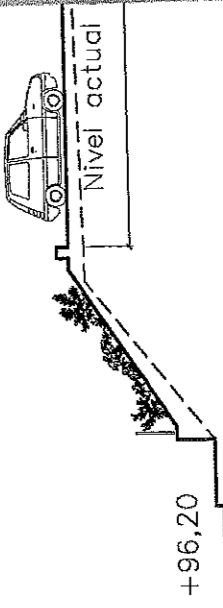
Transformador

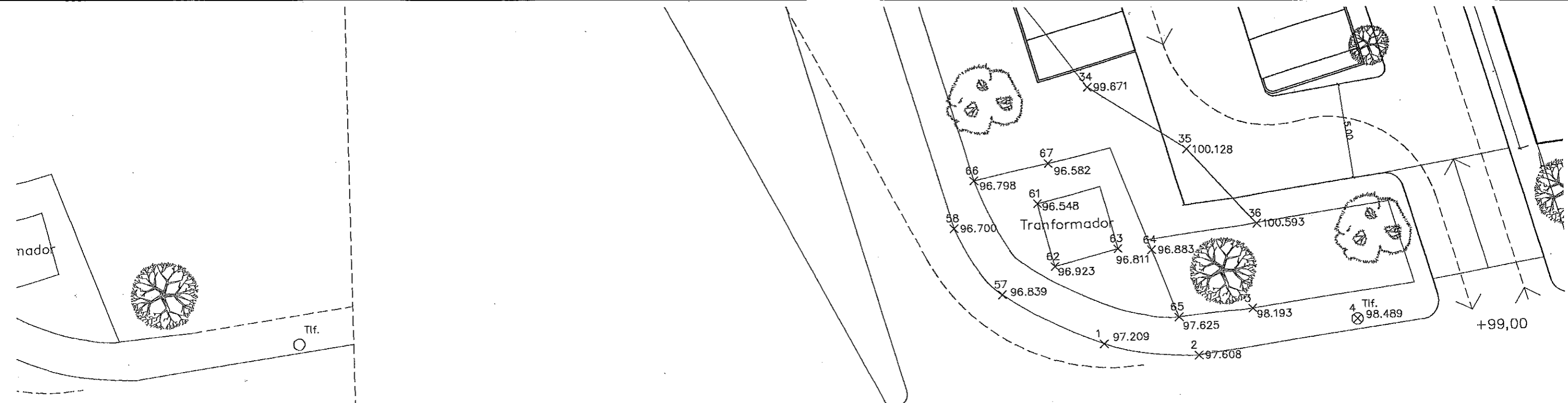




PASSEIG DE CAN SALGOT

PLANTA NIVEL INFERIOR

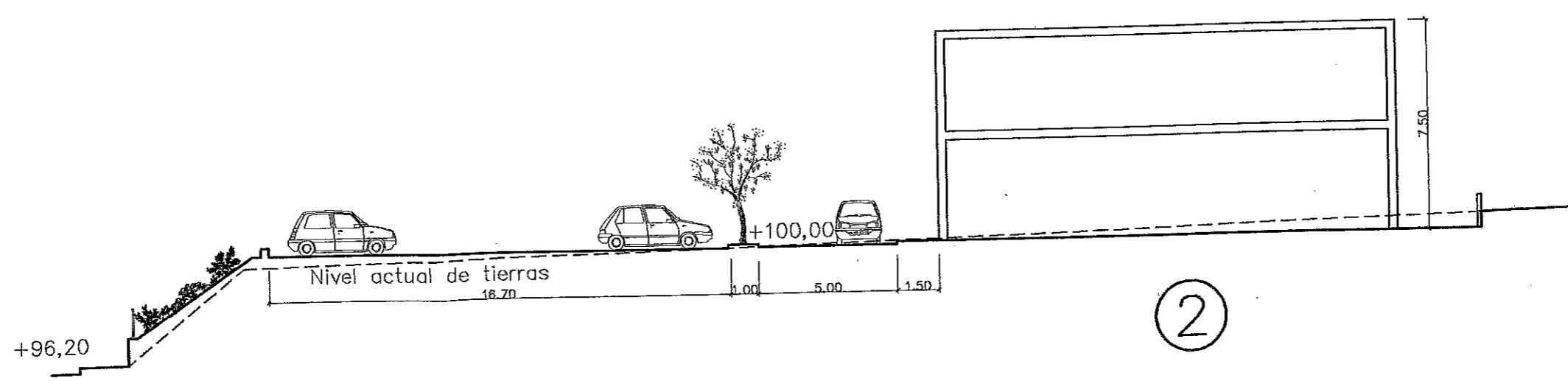




SEIG DE CAN SALGOT

OR

PLANTA NIV

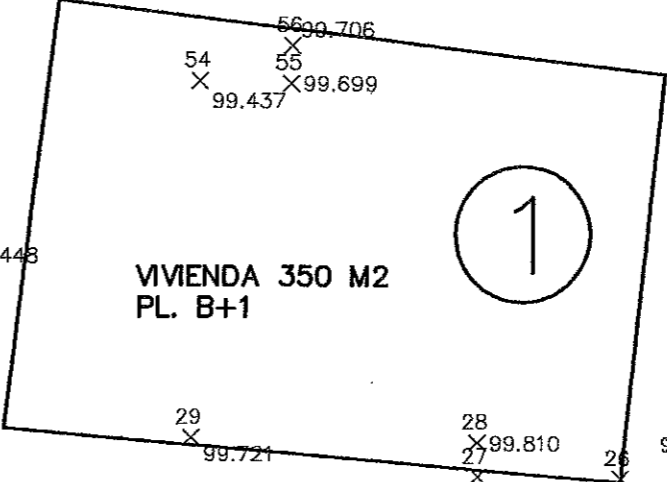


②

SECCION A-A

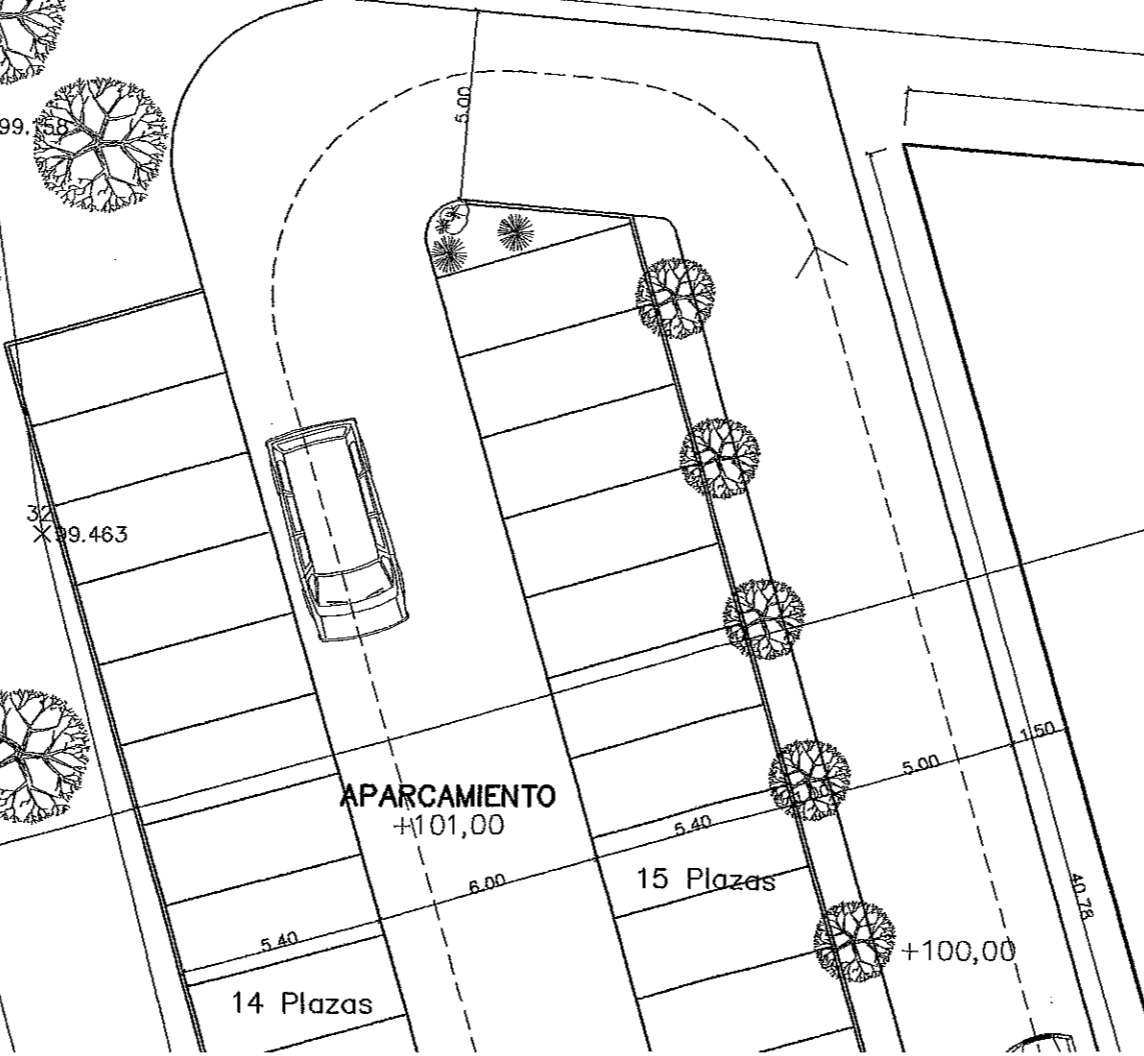
CARRER DE CAN ROURE

PASSATGE CARLES RIBES



VIVIENDA 350 M2  
PL. B+1

1



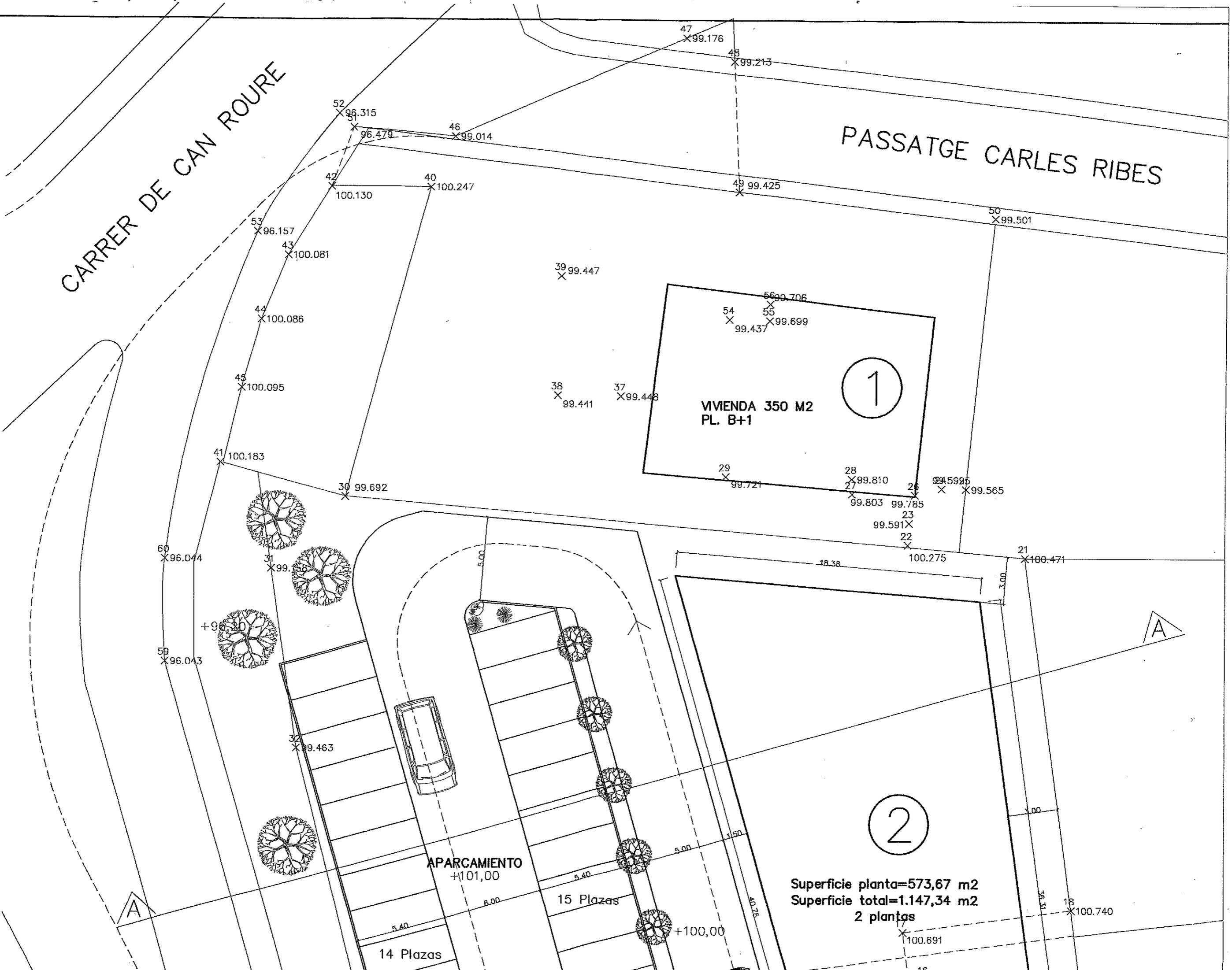
APARCAMIENTO  
+101,00

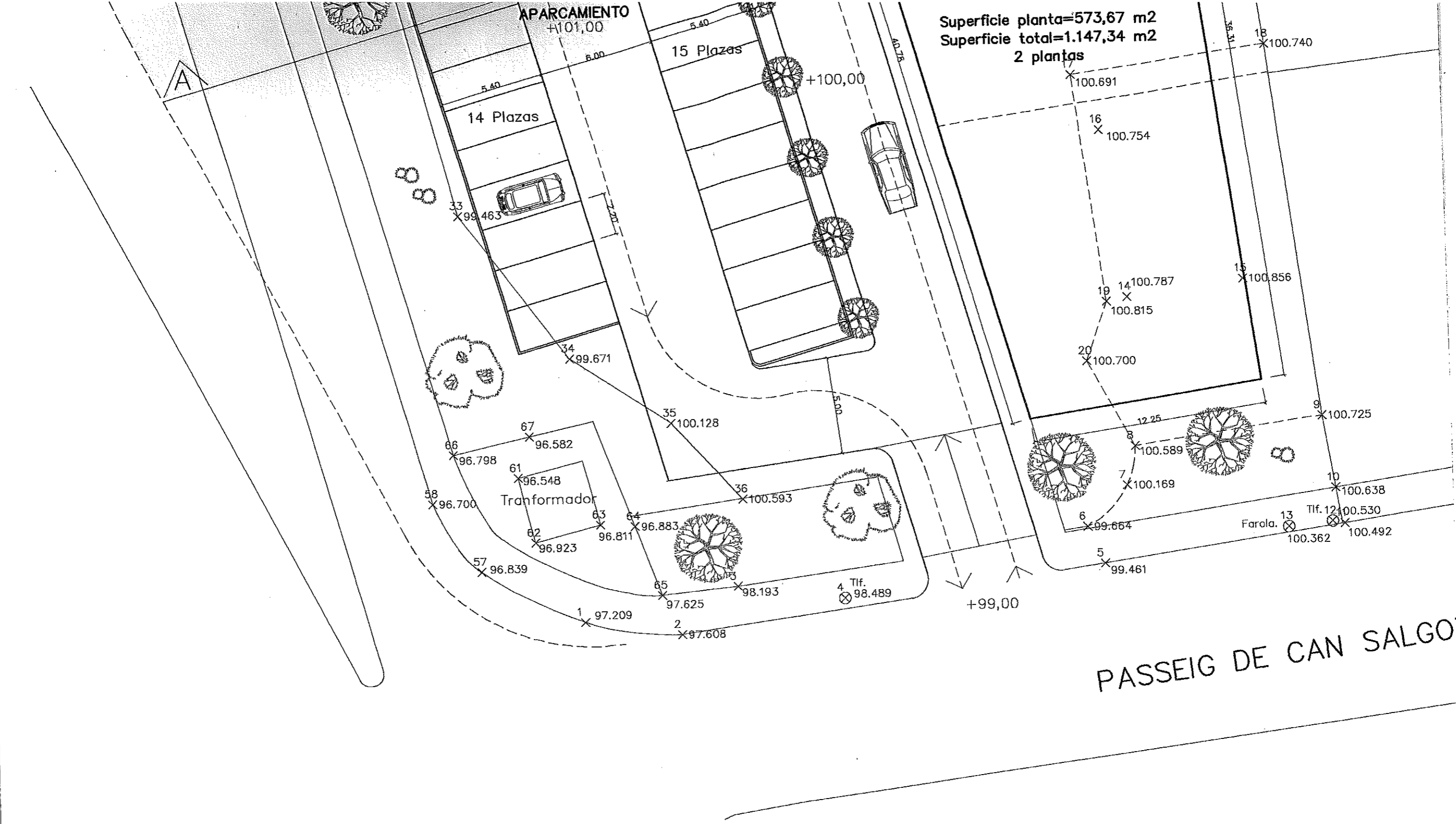
15 Plazas

14 Plazas

2

Superficie planta=573,67 m2  
Superficie total=1.147,34 m2  
2 plantas

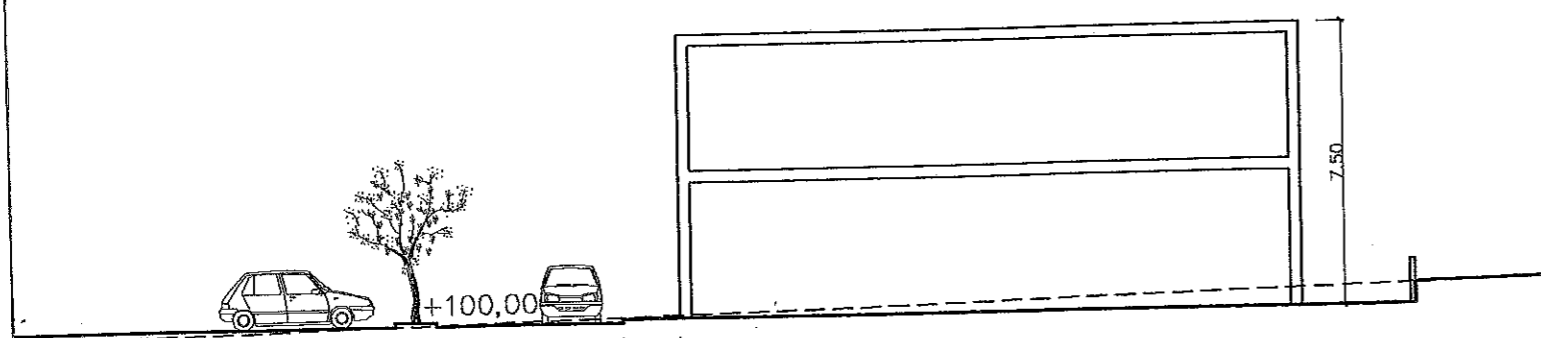




Superficie planta=573,67 m2  
 Superficie total=1.147,34 m2  
 2 plantas

PASSEIG DE CAN SALGO

PLANTA NIVEL SUPERIOR



de tierras  
 16.70 1.00 5.00 1.50